

# 1720 Woodfield Dr Playground Safety Inspection 2019

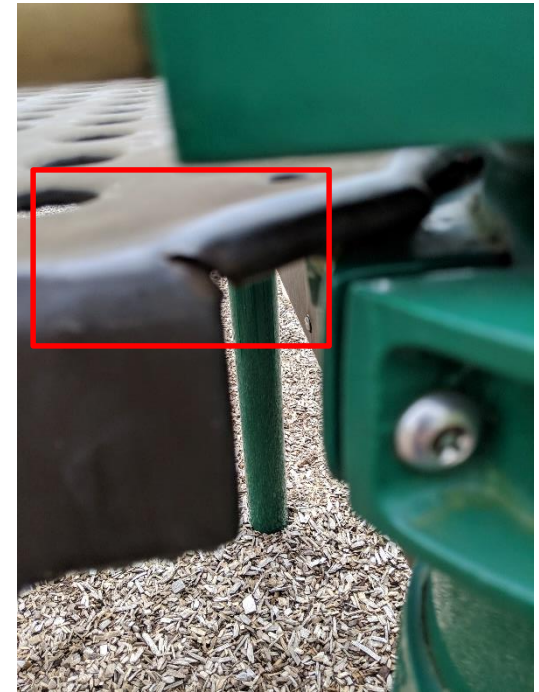
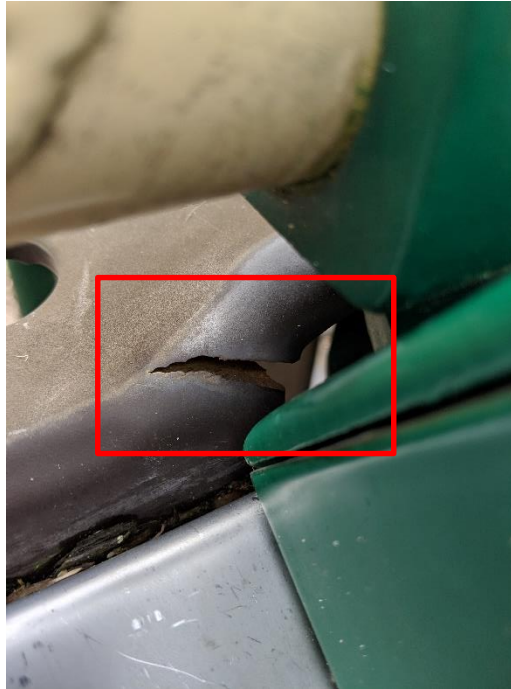
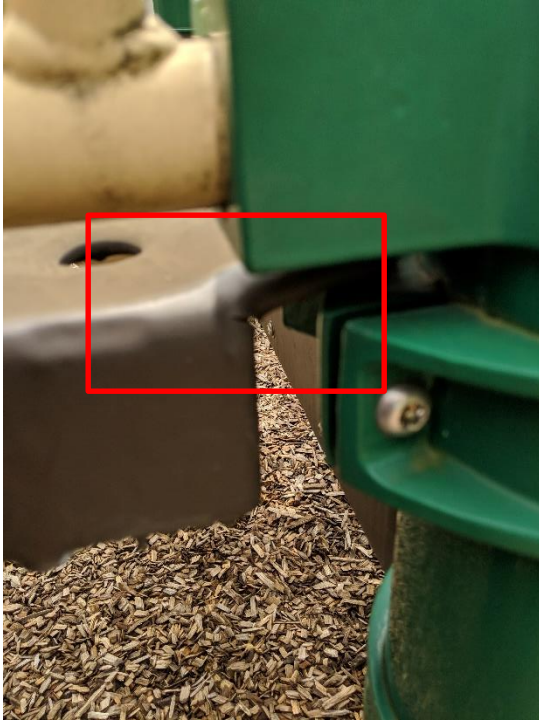


**American Playground**

Completed By: Justin Moos, CPSI 5/3/2019

## Structure

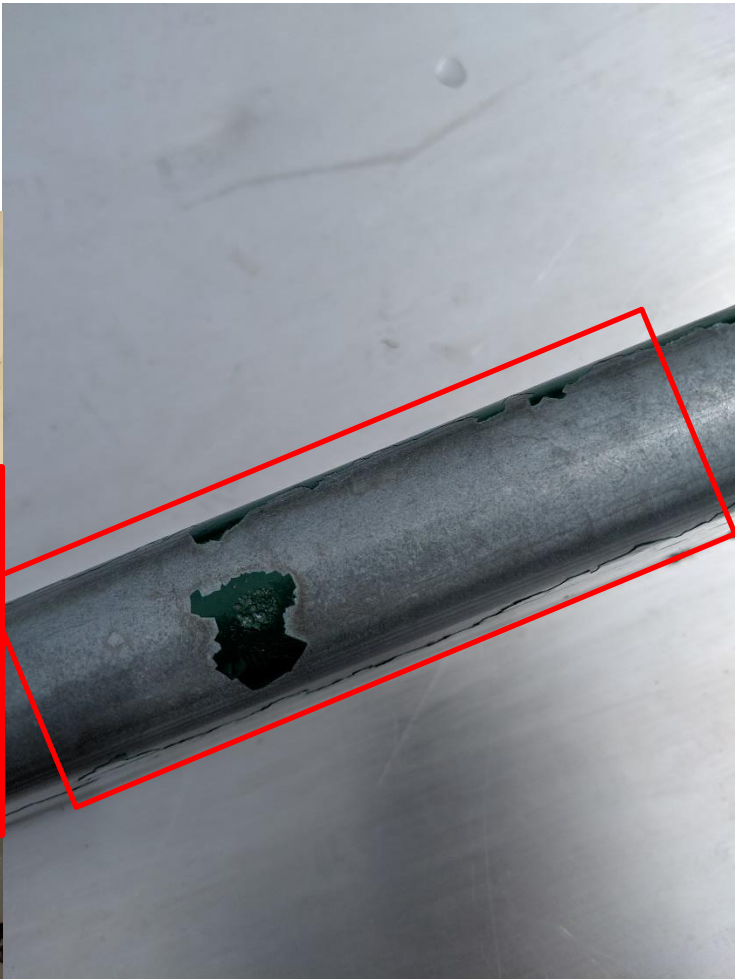
1. Decks cracking Recommend replacement. Cracking will continue to expand. Steel unprotected. Monitor closely
  1. Priority 3.



## Double Slide

1. Rail cap missing. Clothing, hands and other loose items could get caught. Entanglement hazard. Replacement needed immediately.
  1. Priority 1





Structure

- 1. PVC coating missing. Replace step. Steel rusting
  - 1. Priority 4
- 2. Paint coating missing. Touch up exposed steel
  - 1. Priority 4
- 3. Paint coating missing. Touch up exposed steel
  - 1. Priority 4

1

2

3

## Structure

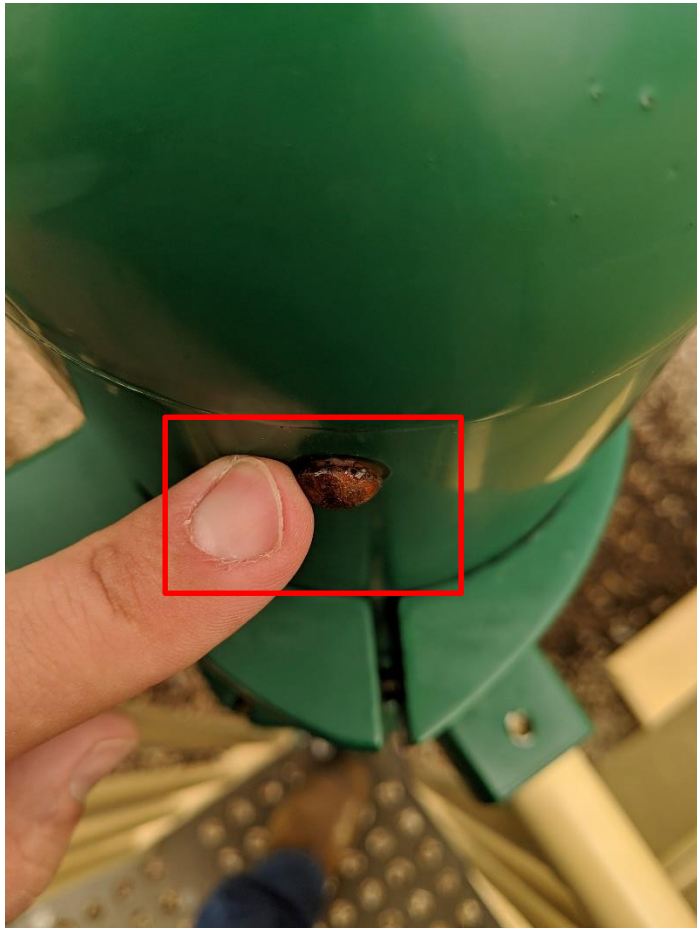
1. Lower Deck Clamps missing. Aftermarket fastner used. Not recommended. Replace with OEM components only
  1. Priority 3



## Structure

1. Carriage bolt head Must be flush. Entanglement hazard
  1. Priority 1
2. Pop rivet not flush, Top deck. High on post. Replace with Aluminum
  1. Priority 3

1



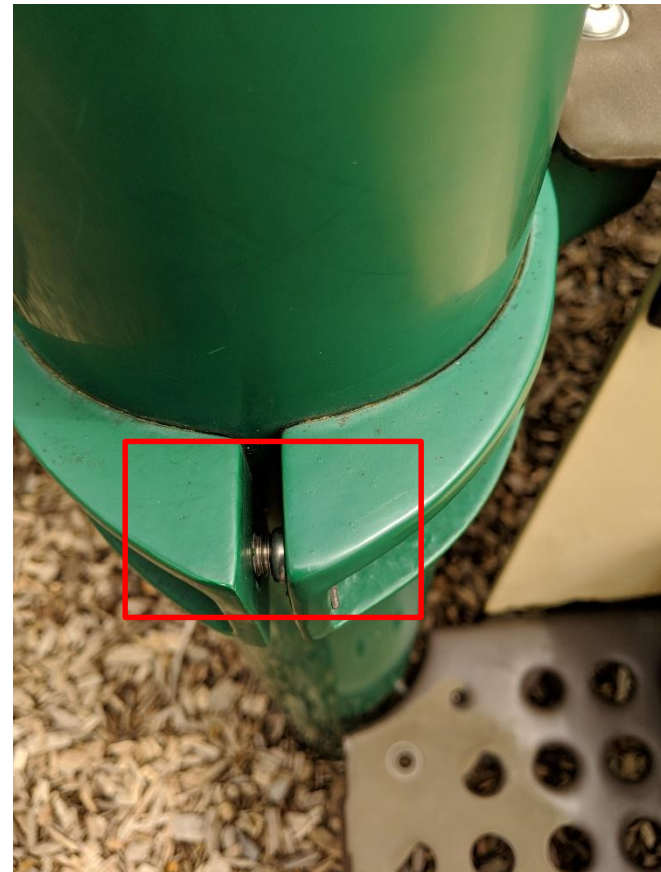
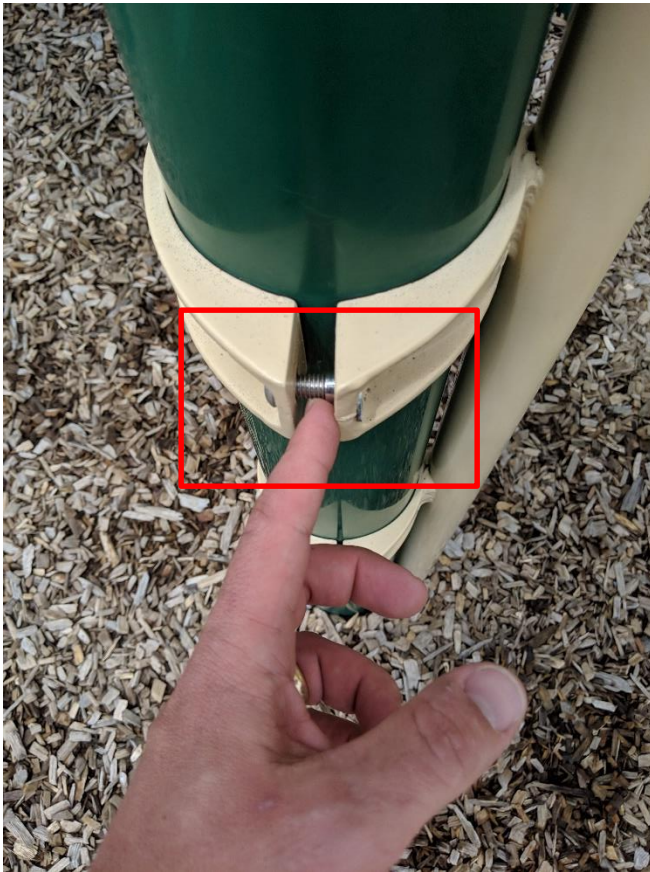
2



## Structure

1. Clamps tightened unevenly. Recommend retighten of all clamps
  1. Priority 4

1



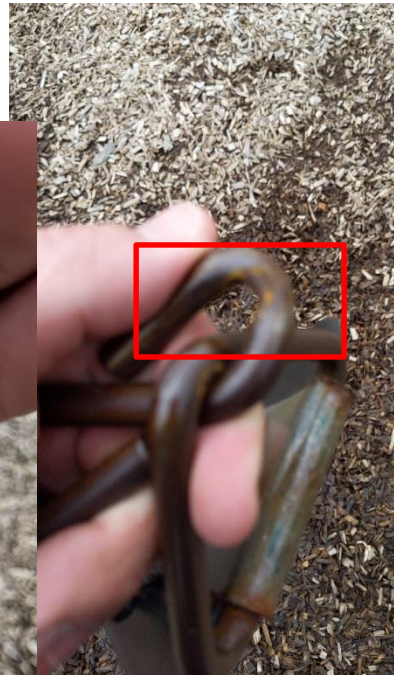
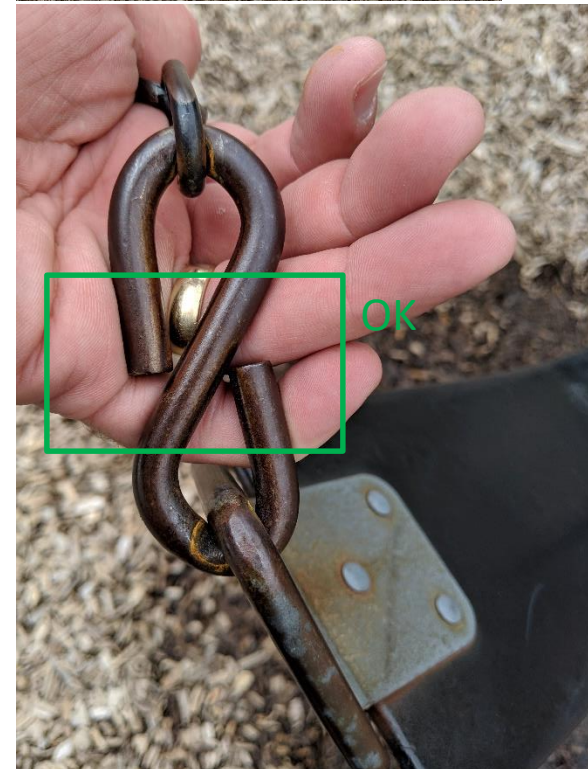
### Swing structure

1. Mulch needed. Recommend swing mats
  1. Priority 2
2. S hook must be closed
  1. Priority 2
3. Swing seat connection points starting to wear. Replace with new chains and seats (10')
  1. Priority 4

1

3

2





## Summary

1. Decks are showing signs of wear and cracking  
Replacement parts are needed.
2. Slide Cap must be resolved immediately.
3. Aftermarket hardware fix is not recommended.  
OEM parts needed.
4. Swings overall are in good condition.  
Recommend new swing seats and chains with improved design. Parts can be provided for this.
5. Loose hardware needs to be tightened and flush.  
Recommend tightening all fasteners and clamp hardware.

# Safety Ratings

- Priority 1 Safety Concern: Most Serious Violation. Non-Compliant Safety concern that may result in permanent disability, loss of life or body part. Conditions should be corrected immediately.
- 
- Priority 2 Safety Concern: Non-Compliant Safety Concern that may result in temporary disability. Condition should be corrected as soon as possible.
- 
- Priority 3 Safety Concern: Non-Compliant Safety Concern that is likely to cause a minor (nondisabling) injury. Condition should be corrected as soon as possible or if condition worsens.
- 
- Priority 4 Safety Concern: Non-Compliant Safety Concern whose potential to cause injury is very minimal. Condition should be corrected as soon as possible or if condition worsens.
- 
- No Violation: Also known as Priority 5. The item has been determined to be compliant with CPSC and ASTM guidelines. Continued ongoing preventative maintenance is recommended.