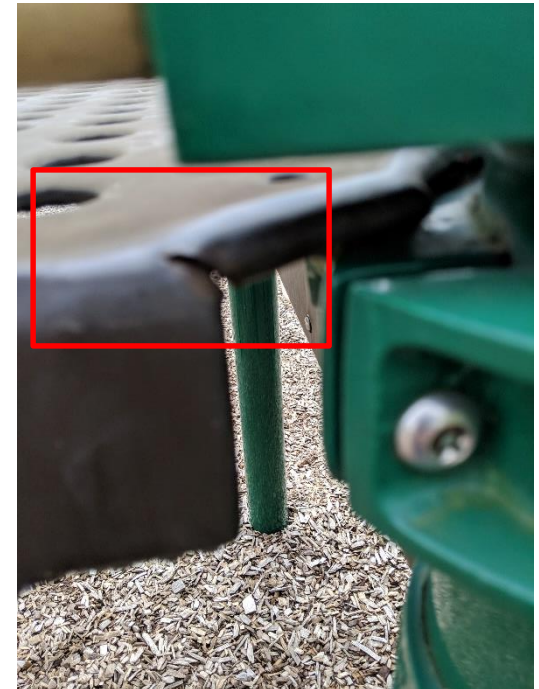
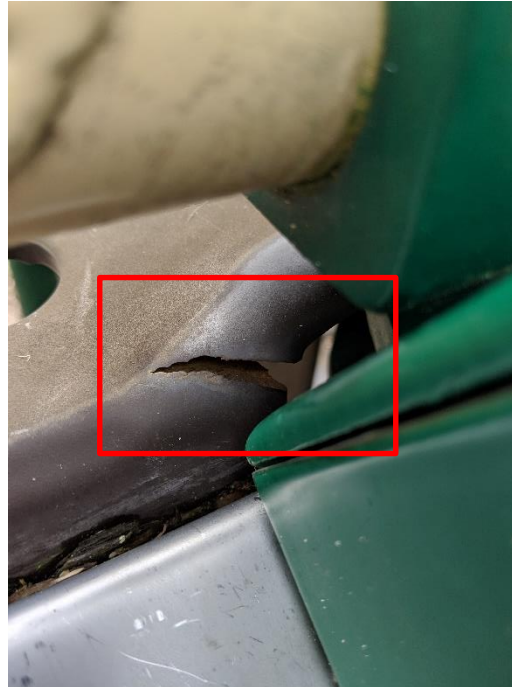
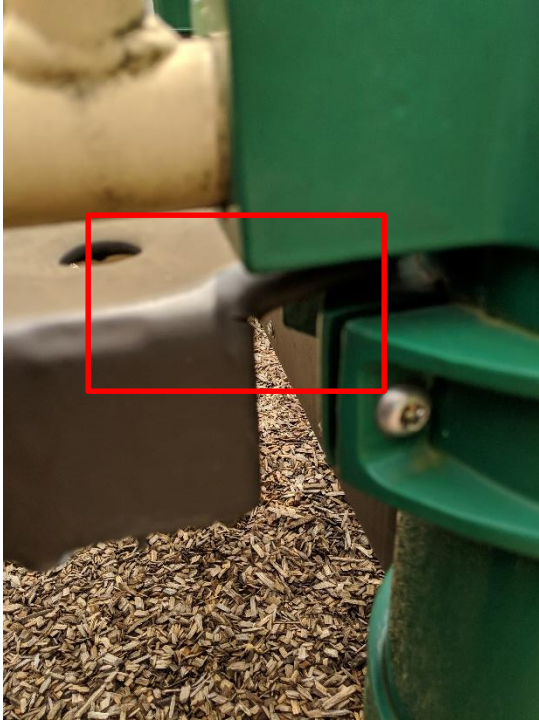




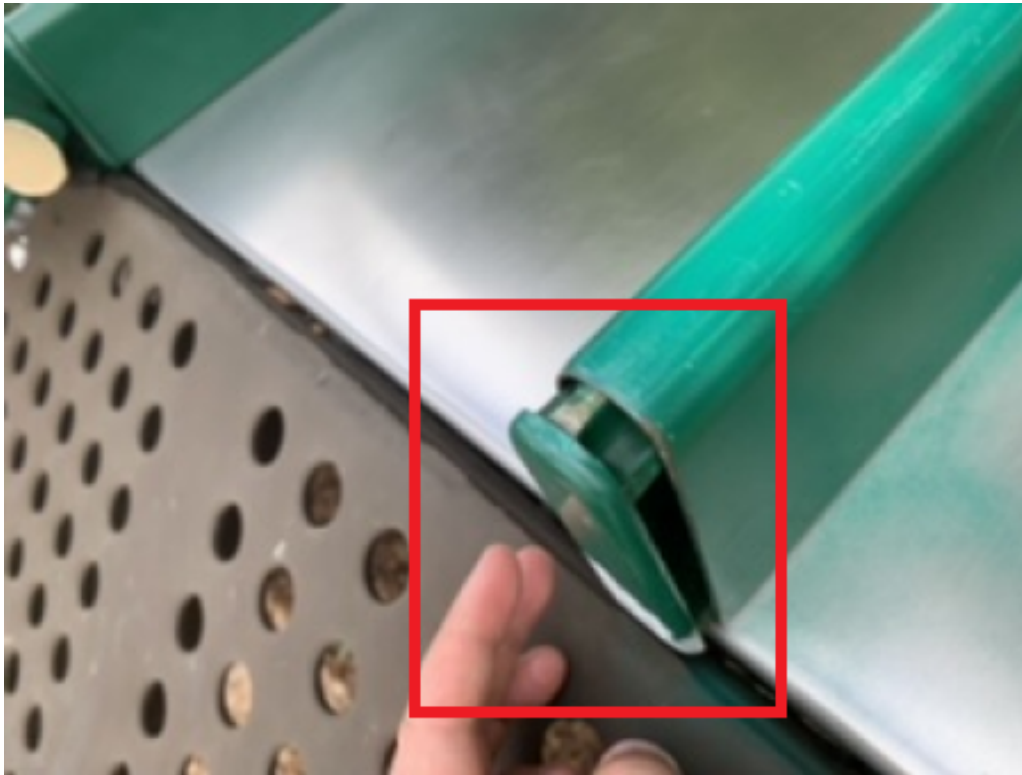
Structure

1. Decks cracking Recommend replacement. Cracking will continue to expand. Steel unprotected. Monitor closely
 1. Priority 3.



Double Slide

1. Rail cap is loose and can easily be removed. If removed, this will cause a Priority 1 entanglement hazard. Recommend secure to slide rail using manufacturer recommendations
 1. Priority 4





Structure

1. PVC coating missing. Replace step. Steel rusting
 1. Priority 4
2. Rust and sharp edges on panels under decks. Needs replaced
 1. Priority 2
3. Twist climber is broken at base exposing metal edges. Needs replaced
 1. Priority 4

Structure

1. Lower Deck Clamps missing. Aftermarket fastner used. Not recommended. Replace with OEM components only
 1. Priority 3



Structure

1. Carriage bolt head Must be flush. Entanglement hazard
 1. Priority 1

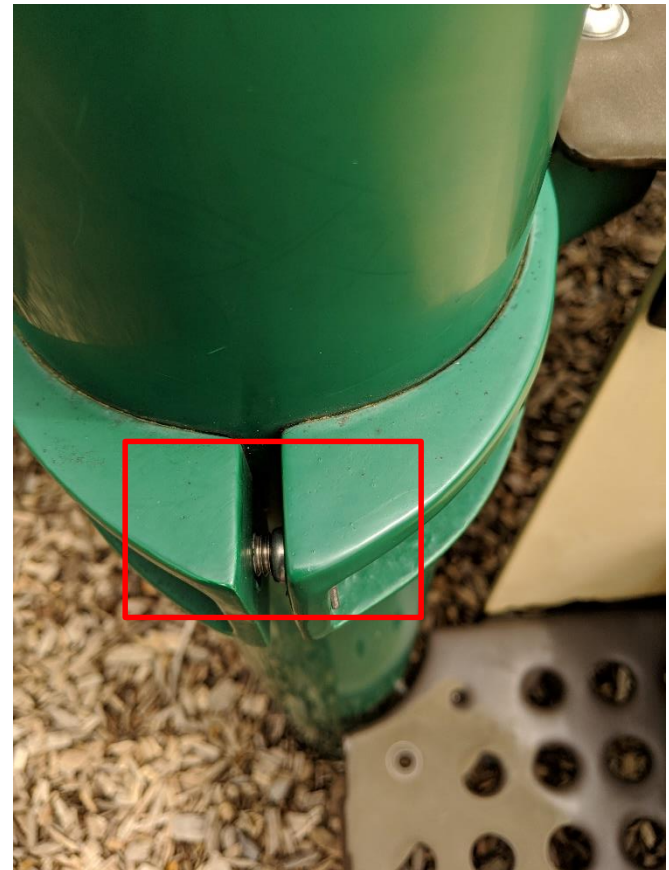
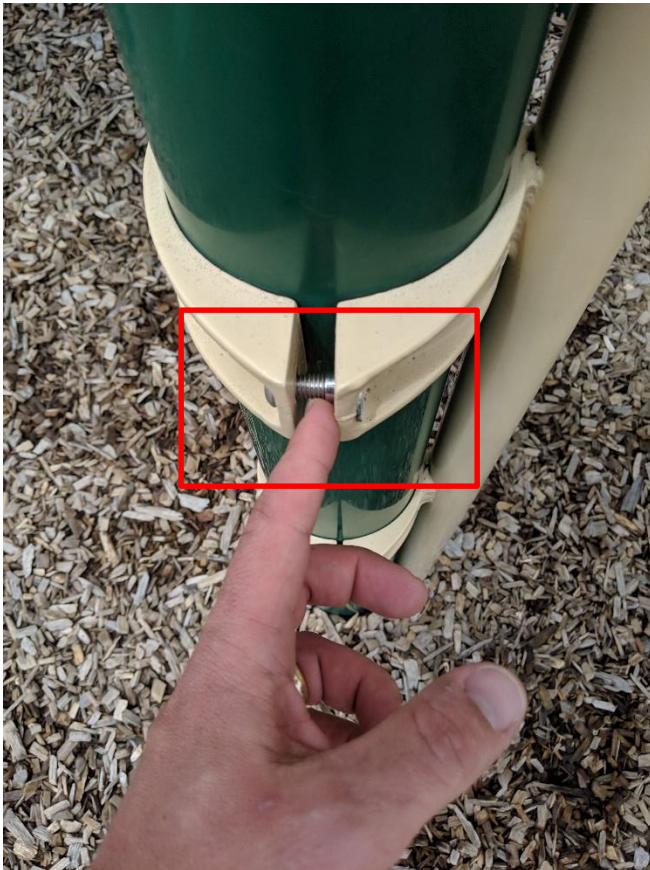
1



Structure

1. Clamps tightened unevenly. Recommend retighten of all clamps
 1. Priority 4

1





Structure

1. Decks have sharp edges underneath. Replace decks
1. Priority 2



Slides

1. Safety Zone required is 6ft. Border timber encroaches safety zone making it less than 6ft. Border needs relocated 1. Priority 4



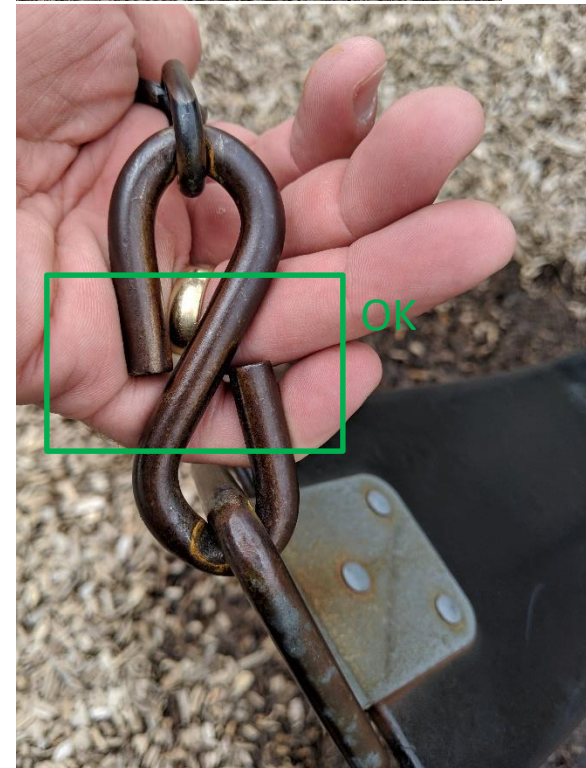
Swing structure

1. Mulch needed. Recommend swing mats
 1. Priority 2
2. S hook must be closed
 1. Priority 2
3. Swing seat connection points starting to wear. Replace with new chains and seats (10')
 1. Priority 4

1

3

2



Summary

1. Decks are showing signs of wear and cracking
Replacement parts are needed.
2. Slide Cap is not secured to the slide. This can easily be taken off and present an Priority 1 risk.
3. Aftermarket hardware fix is not recommended.
OEM parts needed.
4. Swings overall are in good condition.
Recommend new swing seats and chains with improved design. Parts can be provided for this.
5. Loose hardware needs to be tightened and flush.
Recommend tightening all fasteners and clamp hardware.
6. Slide exit does not have the required use zone.
Recommend extending out the border timber to meet the 6ft minimum requirement
7. Twist climber should be replaced due to bottom metal is broken.
8. Panels below deck need replaced
9. Touch up paint recommended on all worn parts to prevent rusting

Safety Ratings

- Priority 1 Safety Concern: Most Serious Violation. Non-Compliant Safety concern that may result in permanent disability, loss of life or body part. Conditions should be corrected immediately.
- Priority 2 Safety Concern: Non-Compliant Safety Concern that may result in temporary disability. Condition should be corrected as soon as possible.
- Priority 3 Safety Concern: Non-Compliant Safety Concern that is likely to cause a minor (nondisabling) injury. Condition should be corrected as soon as possible or if condition worsens.
- Priority 4 Safety Concern: Non-Compliant Safety Concern whose potential to cause injury is very minimal. Condition should be corrected as soon as possible or if condition worsens.
- No Violation: Also known as Priority 5. The item has been determined to be compliant with CPSC and ASTM guidelines. Continued ongoing preventative maintenance is recommended.